



*Technical Diagnostic Services*

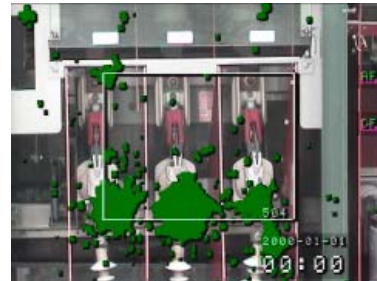
PARTNERING WITH

**No-Outage Electrical Testing**

## CORONA SURVEYS

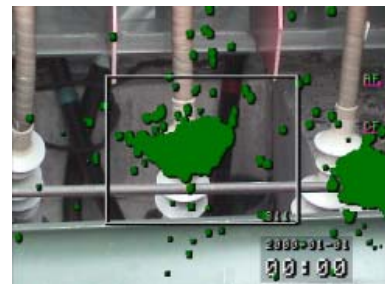
### Purpose

The purpose of performing the corona survey is to detect and document corona activity on insulators and conductors in order to assess the condition of the equipment. Corona is responsible for the generation of ultraviolet radiation, ozone, acids, heat and mechanical erosion through ion bombardment, electric power loss and electromagnetic interference with radio communications.



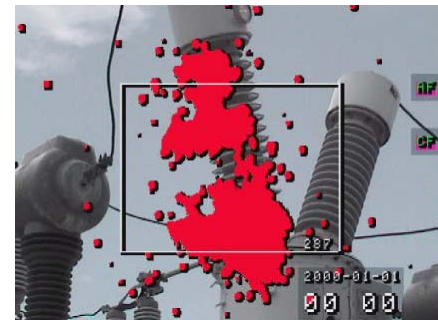
### Reason

Corona by-products destroy insulation and lead to catastrophic failure, while remaining invisible to the eye. Corona Surveys are a very good method to determine potential risk of a flashover or other types of failure in outdoor substations and switchyards. It is also beneficial to inspect cable terminations, switchgear insulators, dry-type transformers and other indoor equipment for damaging corona activity.



### Corona can occur due to:

- Poor Component or System design
- Improper installation or workmanship
- Temporary contamination by icing, salt sprays near highways or Oceans, other chemicals, fog, agricultural chemicals, etc.
- Damage due to storm, wind or lightning
- Damage due to vandalism
- Cumulative damage due to corona activity due to weather conditions
- Cumulative damage due to contamination from nearby sources



**TDS wants to help you  
avoid unexpected outages  
and catastrophic failures**

For complete information contact

Don Genutis at 813.752.6051  
[dgenutis@groupcbs.com](mailto:dgenutis@groupcbs.com)

Ken Standley at 817.465.9494 x224  
[kenneth@technicaldiagnostic.com](mailto:kenneth@technicaldiagnostic.com)

Technical Diagnostic Services

15825 Trinity Boulevard • Fort Worth, Texas 76155

Tel: 817/465-9494 • Fax: 817/465-9573

[www.technicaldiagnostic.com](http://www.technicaldiagnostic.com) • [info@technicaldiagnostic.com](mailto:info@technicaldiagnostic.com)